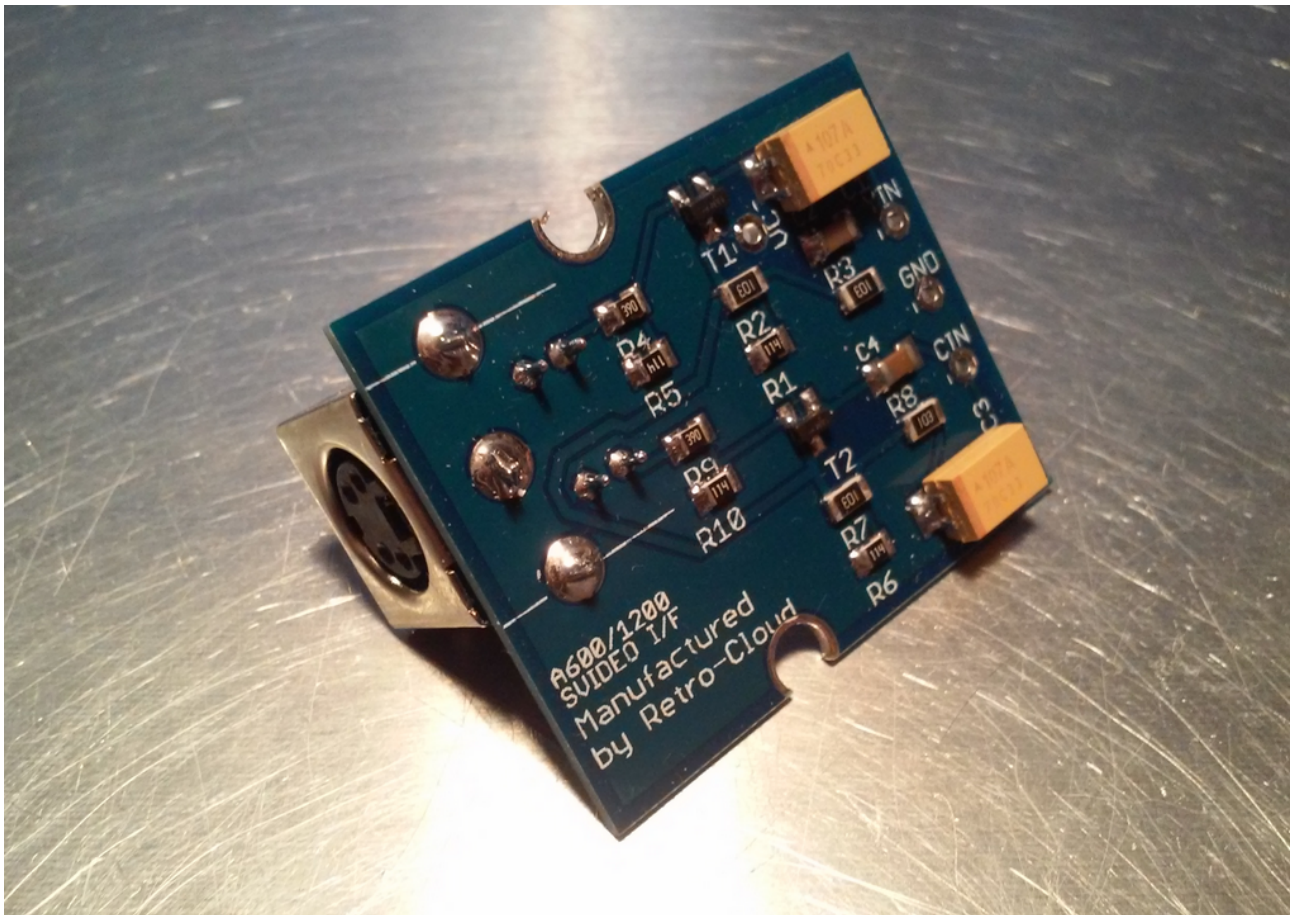


Amiga 600/1200 S-Video installation manual



retro-cloud.eu
2018

Description

The S-Video for Amiga 600 / 1200 is a mod that replaces original on-board modulator with S-Video connector vastly improving picture quality.

This is fully assembled version for internal installation.
Basic soldering skills are required to connect this device.
Board requires four signals described on PCB as:

GND – Ground

VCC – +5 Volts

YIN – Luminance – Leg 16 of Sony CXA1145

CIN – Chrominance – Leg 15 of Sony CXA1145

Board layout has been redesigned and is now full SMT.

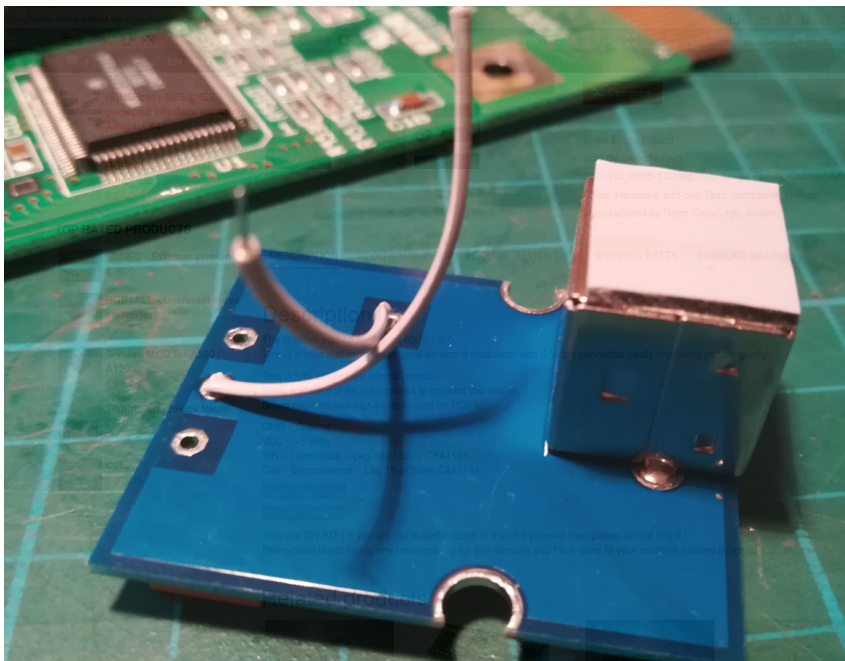
Installation

In order to connect S-video internally, You will first need to desolder original RF Modulator.

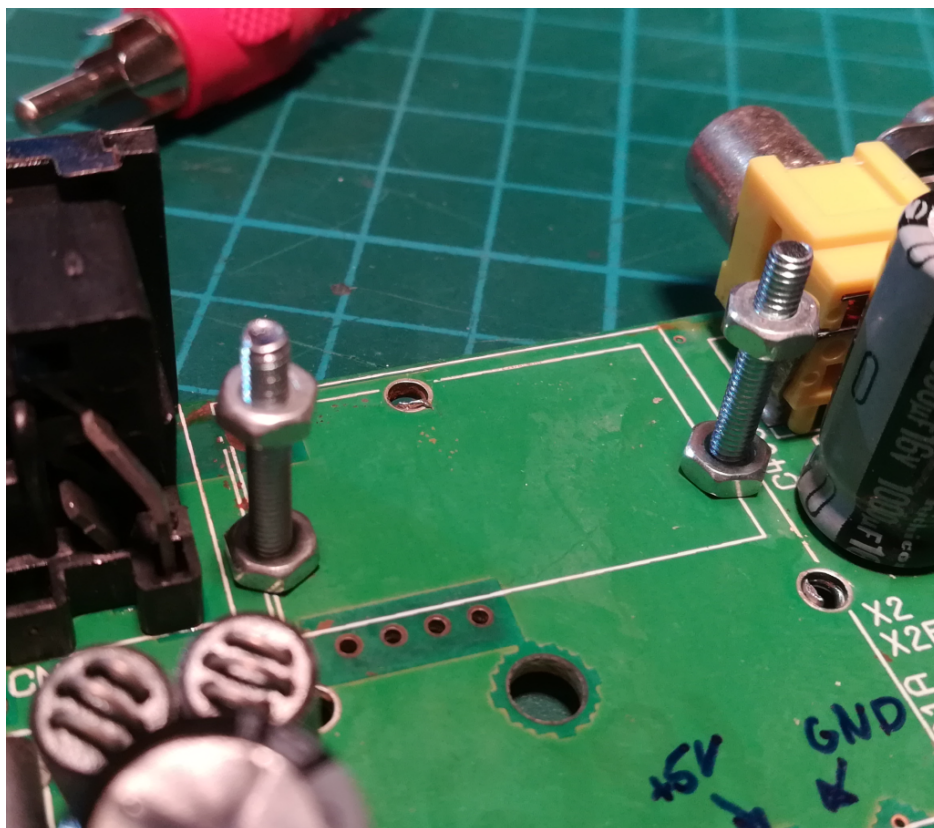
Four wires should be soldered to S-Video PCB on the one end → +5V, GND, CIN, YIN

and on the other end directly to Amiga PCB.

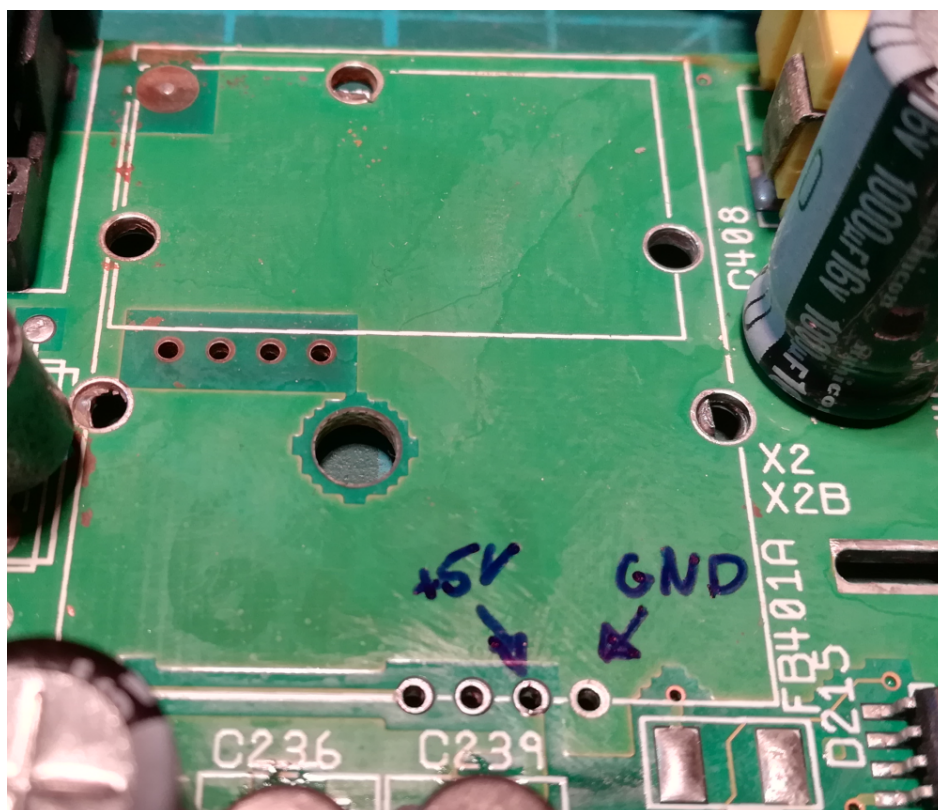
Start off with soldering GND and +5V wires to S-Video PCB



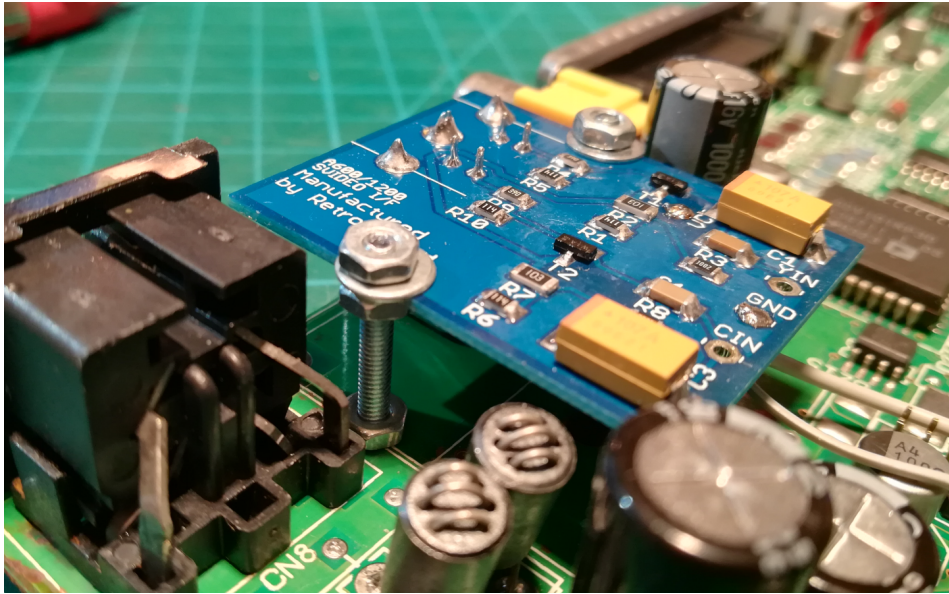
Fasten two bolts on Amiga PCB using original holes.



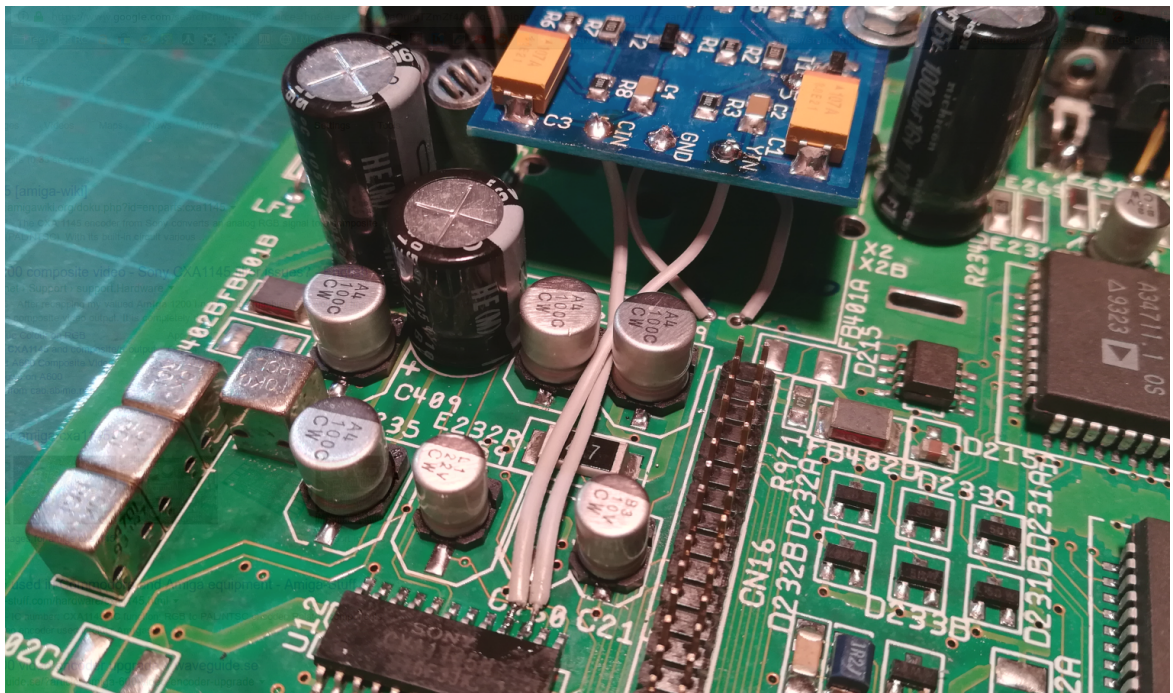
Solder GND and +5V wires to Amiga PCB



Mount S-Video PCB on two bolts and secure it with nuts



Solder wires from PIN 15 of CXA1145 chip to CIN and PIN 16 of CXA1145 to YIN on S-Video PCB.



DONE :)

